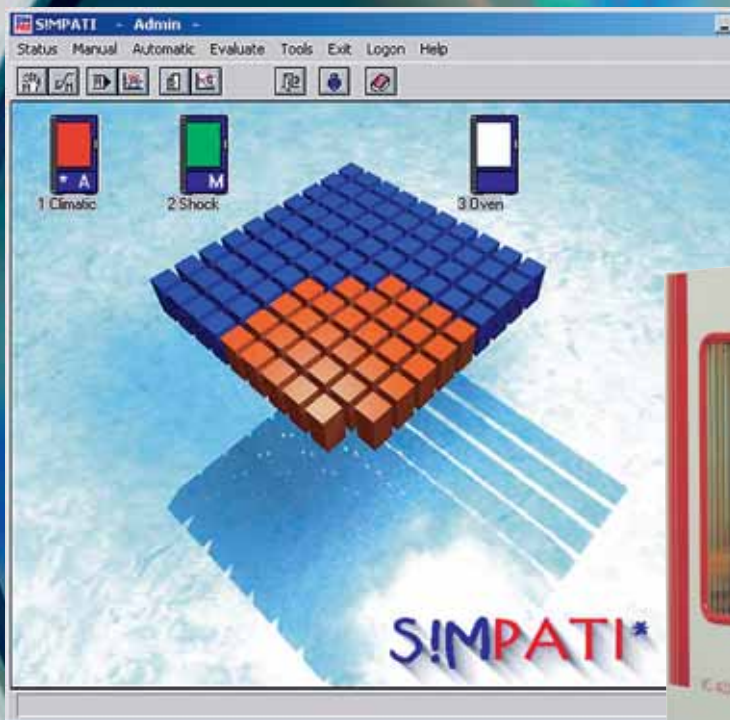


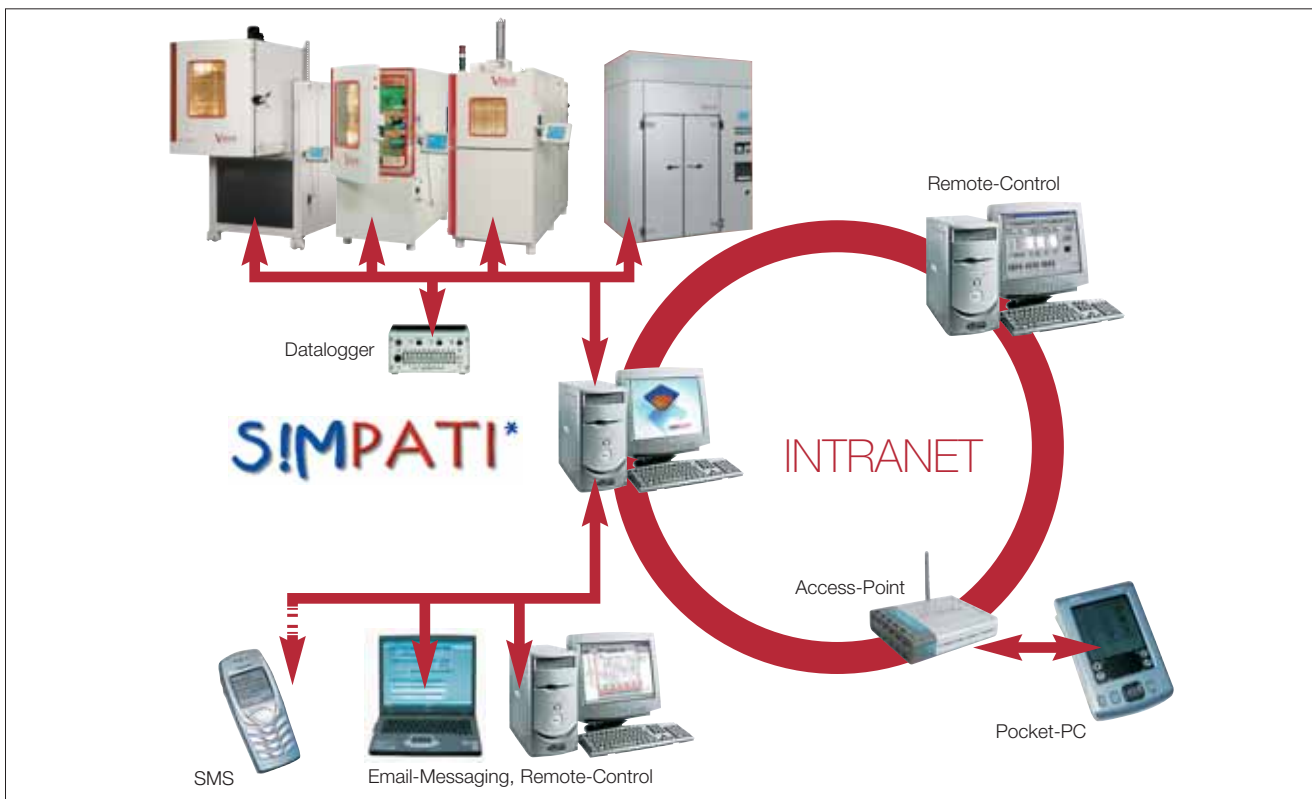
Communication ...

Vötsch
Industrietechnik



... well-appointed with the Software **SIMPATI***
the **Simulation Package** for Test System Integration

Communication without limitation ...



The extensive amount of performance of SIMPATI* ...

SIMPATI*software provides you with the optimum system for operating and controlling of test and production systems.

Measurement recording and evaluation - also possible via local network and Internet - confirms our advanced technology.

Features:

- Control of test and process cycles
- Data storage
- Easy creation of test programs with the graphic, symbolic or shock test editor
- Networking of up to 99 test systems with 1 PC
- Connection of additional measuring devices

- Recording of irregularities and malfunctions during the test cycle
- Graphical print-out of testing data
- Data export to other programs for evaluation purpose
- Calculation of gradients and adaptation times
- Administration of various users
- Program management for production cycles and tests
- All data are made available by the SIMPATI*web server within the PC network
- Transmission of messages via e-mail using an existing mail server (SMTP)
- Definition of setpoints in the network via JAVA Applet with your Internet browser

Options:

- Loading of programs, production data (product, user, system) via barcode
- Monitoring of test systems in Internet Explorer 6.0 via ASP.NET application to Internet information Server (IIS 6.0) in Windows Server 2003
- External module enables electronic signature on electronic paperless test documentation

With SIMPATI*-Pharma - together with option electronic signature - additionally all requirements of FDA 21 CFR part 11 are fulfilled.

... and controlled test conditions

... very easy with SIMPATI*

Our software SIMPATI* is used for both product lines

- Environmental simulation
- Heat technology

and enables you to further optimize the utilization of your environmental testing systems, e.g. installed in the fields of research, development, production and quality assurance.

This software is also highly suitable for Vötsch industrial heating systems.

The operation of the systems is easy and time-saving. Evaluation and documentation of test cycles and production sequences as well as the integration of your special measuring data guarantees a higher quality standard.

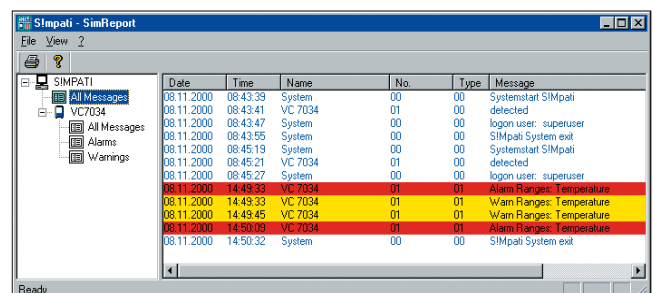
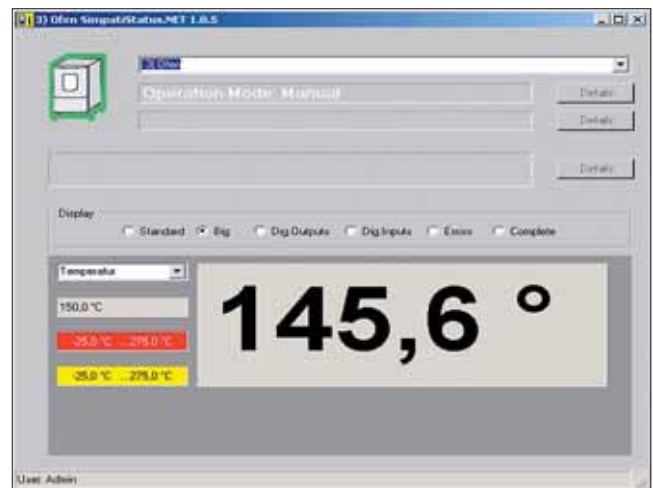
SIMPATI* is network-integrated offering remote operation from other PCs in your network. No special software is required - a standard Internet browser will be sufficient.

The archiving of all parameters of the chamber configuration is ensured.

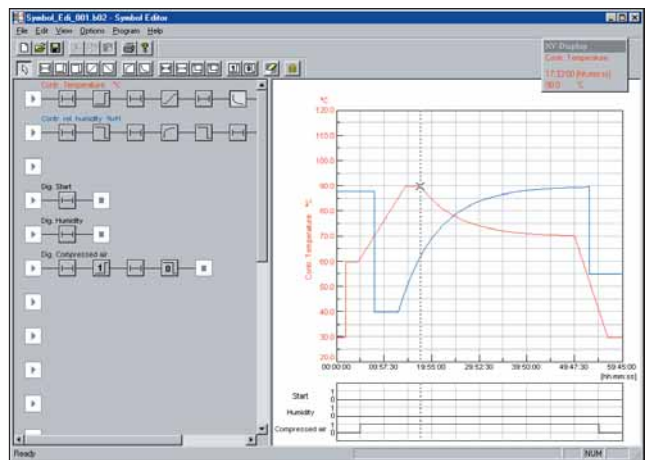
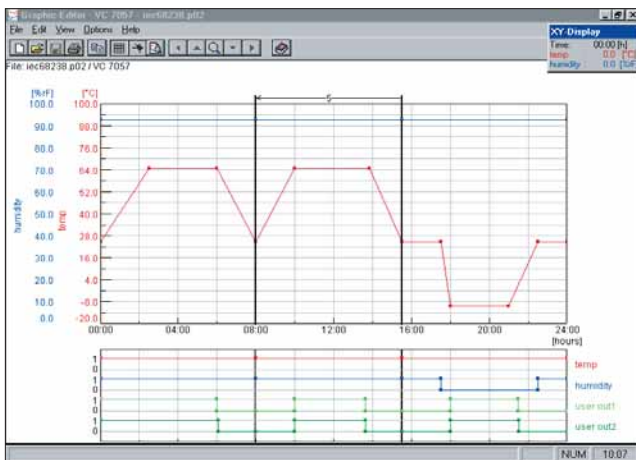
User-friendly operation and self-explanatory menu guidance takes the need for a special training.

Online help will respond to any questions you may have.

Quality has a name...
... Vötsch Industrietechnik!



To define process cycles ...



Creating test profiles ...

SIMPATI* provides you with the right editor for your various programming tasks. You can choose between a graphic or symbolic editor. A special editor is available for temperature shock test systems

Graphic editor

The graphic editor facilitates the creation of test programs. Contrary to previous programming techniques, you can now use the graphic editor to design your production and test cycles with the snap of a finger.

As soon as you have selected the menu item "Create test programs", the graphic editor appears on the screen. A small cross is representing your mouse pointer.

- ☞ Move the mouse pointer to a point on the profile that you wish to alter.
- ☞ Double click the left mouse button at this point
 - You have now created the first point of your test profile.

- ☞ Move the created profile point to the desired position by clicking the left mouse button and keeping it pressed whilst moving (Drag-and-Drop).

- ☞ Move the cross in any direction (e.g. to the time $t = 20\text{min}$). You have now programmed the first 20 minutes of your test program.

Symbolic editor

The "Symbolic program editor" can be used alternatively for all systems with **SIMCON/32** and **MINCON/32** controller. For creating simulation programs, graphical function blocks, e.g. set value, jump and ramp are chained up. The resulting test curve is clearly displayed in a separate window.

The editor is particularly suitable for programming special set value curves, e.g. exponential functions that are usually quite difficult to implement.

Shock test editor

For temperature shock test cycles a specially tailored editor is available. The main test parameters such as temperatures in the hot and cold zone as well as the dwell times are entered in a simple input dialog and automatically converted into the corresponding test program.

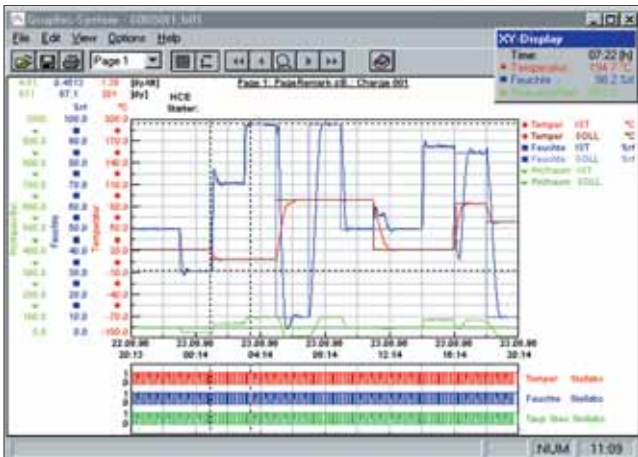
The following operating modes are supported:

- Normal (only time control)
- Time-optimized (minimum overall processing time with guaranteed dwell time)
- Energy-saving

Advantages of editors

- Time-saving as no extensive training is required
- Error-free and quick creation of production and test cycles

... Feeding and evaluation of process data



Evaluation of measured and process data ...

Measured and process data are captured, stored and can now be comfortably represented in the form of a graphic.

They contain all information you require to benefit from the evaluated measurement data.

- Set and actual values of all process parameters
- Status of all digital channels during the entire test period
- Deviations of actual values from the set values
- Gradients of the process parameters
- Further data processing, e.g. with Excel
- Conversion of data into pdf-format by means of separate tool

Special features ...

You can ...

- display data over the entire test period or just over a small section of it
- zoom into certain sections of the entire profile and depict exact values of the process parameters using the readout function
- export captured data to Excel for further evaluation
- copy data in graphic form to a word processor for documenting your process values and tests
- configure computer functions (e.g. averaging set/actual deviation etc.)
- realize process visualisation

BarCode-scanning ...

Bar code scanning technology can now be used with SIMPATI*. The alternative to keyboard and mouse providing significant advantages such as:

- Simple to use - even in clean-room conditions
- "Fault-free input of lot numbers and product ID's
- Scanning of process data
- Automatic assignment of process cycles to existing products
- Extensive training not required, no PC operation.

Wireless scanner technology scans and transfers the information, e.g. during the loading of chambers.

Integration ...

SIMPATI* in local network

Remote control

A JAVA Applet is included in SIMPATI* to enable definition of setpoints and monitoring from any authorized PC in the network via an Internet browser.

Retrieving information

SIMPATI* has a web server which prepares relevant information and makes it available within the PC network. Data can be retrieved from any PC using an appropriate Internet browser.

Distribution of information

SIMPATI* manages all system error messages on the hard disk of the PC. The error report is a great tool to search the error database for individual systems, certain time frames or different classes of error messages.

In addition to the normal on-screen messages and the entry in the report file, e-mails can be generated and transmitted to various recipients.

Conceivable recipients of these e-mail messages can be the PC in the office, a control centre or a mobile telephone.

SIMPATI* uses an available mail server and supports SMTP.



Mobile information

SIMPATI* networks up to 99 chambers and systems of environmental simulation and heat technology.

SIMPATI* provides a comfortable means of operating and monitoring from your PC.

SIMPATI* also supports the modern possibilities of Internet Communication for monitoring via Internet Browser and information via e-mail.

Interfaces ...

To network your systems, SIMPATI* processes data from external interfaces:

- RS 232 / RS 422 / RS 485
- TCP/IP
- IEEE 488.2/GPIB (option)

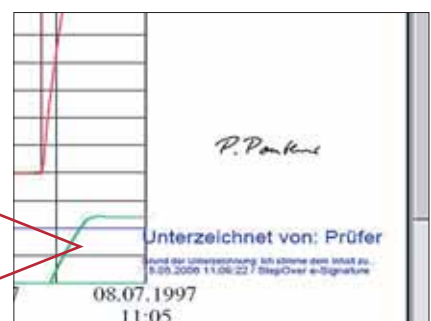
Through internal interfaces, SIMPATI* is compatible with:

- Microsoft-Word / Excel
- Acrobat Reader (pdf-format)
- Labview
- Your special application software, when using the TPC/IP interface technology

SIMPATI* can be operated under Windows 2000/XP Prof. and Windows 2003 Server.

SIMPATI* not only provides process information at your Desktop PC but also virtually anywhere via your hand held PDA (Personal Digital Assistance). The PDA provides the SIMPATI* services via Browser or via e-mail. The PDA can be used either in your facility-network via wireless LAN or universally via GPM or GPRS.

The PDA keeps you permanently updated and provides you with all necessary information.



Advantages at first sight ...

- Perfect evidence of the conduction of complex tests and heat treatment processes of your products
- Comfortable evaluation thanks to vivid graphics and computing tools
- Clear representation of all digital channels
- Further processing with familiar software products, e.g. Excel, Word, Labview etc.
- Compatible with your special application software thanks to TCP/IP interface
- The notifying tool supports the transmission of messages per e-mail using an existing mail server (SMTP)
- Comfortable administration of various users (FDA 21 CFR, Part 11 conform)
- All data are made available in the PC network by the S!MPATI* web server

S!MPATI*	Windows 2003 Server	Windows 2000/XP Prof.
For computer system	IBM compatible PC	
CPU	> Pentium 4 or compatible	
- RAM	> 1 GB	> 512 MB
- Hard disk capacity free for S!MPATI*	> 40 MB	> 40 MB
- Graphics	> 800x600 pixel, 256 colours with corresponding screen	
- CD ROM drive	Yes	Yes
- Keyboard	Standard	Standard
- Mouse	Standard	Standard
Supported interfaces	RS 232 / RS 422 / RS 485 / IEEE 488.2 / GPIB / TCP/IP with external converter	
Networks - Windows	Yes	Yes
- Novell Netware	Yes	Yes
- TCP/IP, NFS	Yes	Yes
Operating modes - Manual operation	Simple setting of fixed software set values permanent monitoring of system	
- Automatic operation	Automatic setting of simulation and production programs, permanent monitoring of system	
Control channels (e.g. temperature, humidity)	64	
Setting channels (e.g. fan)	64	
Measurement channels (e.g. freely movable Pt100, 0-10V)	64	
Switching channels (e.g. start)	128	
Counting channels (e.g. operating hour counter)	16	
Event-oriented intervention in the cycle via a linked program	Yes	
Programming: a) Graphic editor b) Symbolic editor c) Shock test editor	Easy setting of set values, tolerance limits and control tracks	
Documentation of programs (printer)	Line graphics / comment	
Option:	Signing of documentation with electronic signature	
Program start - Selectable starting point	Yes	
- Lead time	Yes	
Automatic start after power failure and voltage recovery	selective	
Representation during simulation cycle	in tabular form / line graphics	
Automatic alarm signaling of faults	Yes	
Archiving	Data records are stored on the local hard disk or within the network	
Archiving frequency	Selectable from 5 sec. to several hours	
Evaluation of results	Line graphics / tabular form	
Error reports	Screen output / printer output	
Error signaling	Local / via network / as e-mail	
Support of additionally measured values	Via software interface to different data loggers and converter cards	
Printer	all system printers	

1) The exact specification of the hardware and software requirements is included in your specific quotation.



Qualification documentation

For the S!MPATI* software we provide FDA-conform qualification documentation.

Declaration from the manufacturer FDA 21 CFR Part 11

All products of Vötsch Industrietechnik GmbH, equipped with control systems of the series S!MCON 32/M!NCON 32, controlled with software S!MPATI* from version 2.02 onwards, fulfill the guideline **FDA 21 CFR Part 11**.

Your Partner for Environmental Simulation & Heat Technology



Environmental Simulation

Standardized test systems or according to customer specifications for industry and research. From standard to systems complex in structure

- Temperature and climatic test systems
- Light climatic test cabinets
- Building and material test systems
- Temperature shock systems
- Stress screening systems with temperature and climate
- Vibration test cabinets with temperature and climate
- Corrosion test systems
- Noxious gas test cabinets, emission test chambers
- Phytotrons and systems for biological research
- Pharmaceutical systems for performing stability tests
- Walk-in chambers for temperature/climate and corrosion tests

Heat Technology

Heat treatment and drying systems from the compact standard unit to the tailor-made production system

- Heating and drying ovens - special dimensions also available
- Lacquer drying cabinets according to EN 1539
- Explosion-protected ovens
- Hot air sterilizers
- Clean room heating and drying ovens
- Vacuum heating and drying ovens
- Heating and tempering furnaces, chest ovens
- Heating ovens for inert gas operation
- Continuous ovens for continuous heat processes
- Charging systems
- Heating alternatives, e.g. electrical heating, gas, infrared, microwave, warm water, steam, thermal oil

Competent and customer-oriented ...

- Certified according to DIN EN ISO 9001
- DKD (German Calibration Service) calibration of temperature and climatic test cabinets and DKD/WKD (Factory Calibration Service) calibration of sensors and measuring systems
- Individual consultation, project planning and development
- Technical adaptation and modernisation of existing systems
- Networking of old and new systems
- Qualification documentation for chambers and **SIMPATI***-Software

Vötsch
Industrietechnik

Vötsch Industrietechnik GmbH
Umweltsimulation · Wärmetechnik

Environmental Simulation

Beethovenstraße 34
72336 Balingen-Frommern
Germany
Telefon: +49 (0) 74 33 / 303-0
Telefax: +49 (0) 74 33 / 303-41 12
info@v-it.com
www.v-it.com / www.voetsch.info

Heat Technology

Greizer Straße 41-49
35447 Reiskirchen-Lindenstruth
Germany
Telefon: +49 (0) 64 08 / 84-73
Telefax: +49 (0) 64 08 / 84-87 47
info-wt@v-it.com
www.v-it.com / www.voetsch.info